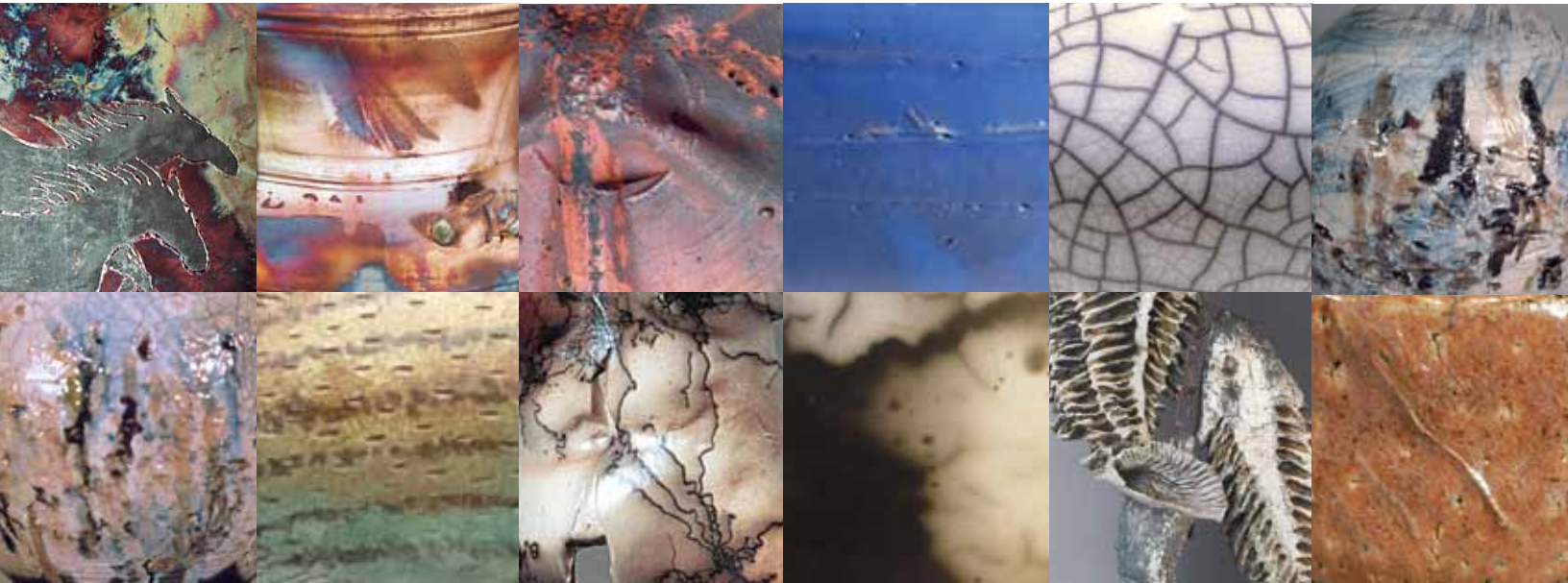


15 ~~10~~ tried & true raku glaze recipes



recipe cards for our
favorite raku pottery glazes



This special report is brought to you with the support of AMACO® & Brent

CONTENTS

Good news for those of you who raku fire and are looking for some new glazes and slips to try out! We've gathered some of our favorite raku glaze recipes in a convenient recipe-card format, perfect for printing and taking to the pottery studio. If you are interested in building a collection of beautiful raku ceramic glazes, or adding variety to the ones you already have, you've found the perfect resource. We have a great assortment including several copper matts, a white crackle and even a shino! Maybe you already have a repertoire of glazes but want to mix it up a bit; try experimenting with a flashing slip or a terra sigillata for a variety of surfaces in the post-reduction firing. Or combine several of the slips and glazes to expand your surface possibilities even further!

And remember, as with all things ceramic: results may vary! Use the various images here as a guide to the surfaces you'll get, but be sure to always start out with small batches and have fun testing and tweaking! Now get out there and mix up some new pottery glazes!

15 TRIED & TRUE RAKU GLAZE RECIPES

Red/Bronze Raku Glaze

Hasselle Copper Matt

Kansas State White Slip

White Opaque Gloss

Ferguson's White Crackle

Kelley's Low-Fire Shino

Alligator Matt White

Riggs Terra Sigillata

Peel-Away Slip

Copper Matt Raku

White Crackle Raku

Basic White Crackle

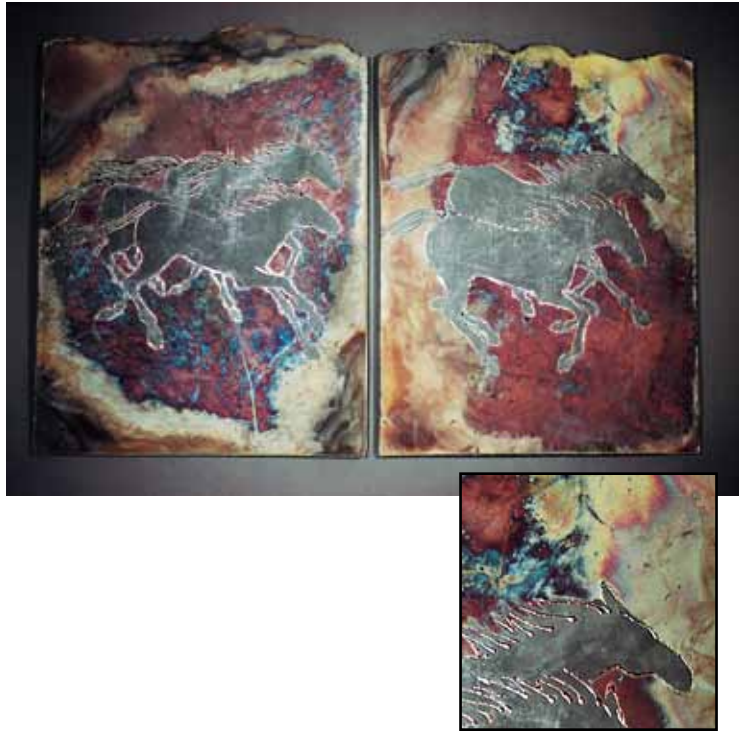
Del Favero Luster

Rogers White (clear)

Yellow



RAKU



Red/Bronze Raku Glaze

Cone 05

Colemanite	50.0 %
Ferro Frit 3134	50.0
	100.0 %

Add: Tin Oxide	5.1 %
Copper Carbonate	5.6 %

From *Raku Firing: Advanced Techniques*.

Note: Colemanite is no longer mined so you will need to test either Gerstley Borate or a boron frit as a substitute.

RAKU



RAKU



Hasselle Copper Matt

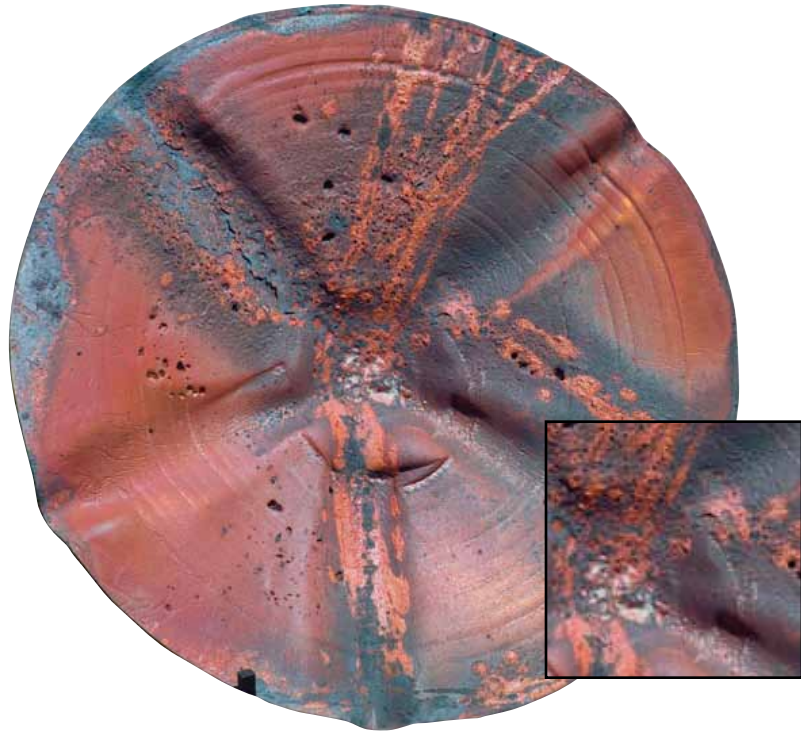
Black Copper Oxide	80 %
Ball Clay	20
	100 %

Add: Bentonite	3 %
----------------------	-----

From *Raku Firing: Advanced Techniques*.

RAKU

RAKU



Kansas State White Slip

Cone 9

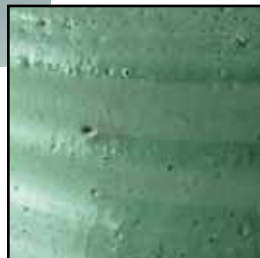
Dolomite	10 %
Custer Feldspar	14
Ball clay	29
EPK Kaolin	38
Silica (Flint)	9
	<u>100 %</u>

From *Raku Firing: Advanced Techniques*.

RAKU



RAKU



White Opaque Gloss

Ferro Frit 3110	80 %
EPK Kaolin	20
	<u>100 %</u>

Add: Bentonite. 2 %

Blue Variation

Superpax	15 %
Mason stain 6306 Vivid Blue . . .	10 %

Green Variation

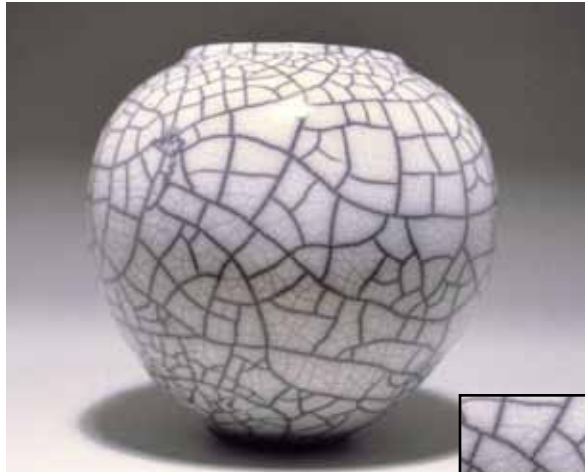
Mason stain 6271 Mint Green . . .	10 %
-----------------------------------	------

Stains provide color to the base glaze and superpax is an opacifier that makes the clear base glaze an opaque, glossy white.

From *Raku Firing: Advanced Techniques*.

RAKU

RAKU



Ferguson's White Crackle

Gerstley Borate	65 %
Tennessee Ball Clay	5
Nepheline Syenite	15
Tin Oxide	10
Silica (Flint)	5
	<hr/>
	100 %

From *Raku, Pit & Barrel: Firing Techniques*.

RAKU



RAKU



Kelley's Low-Fire Shino

Lithium Carbonate	26 %
Nepheline Syenite	64
EPK Kaolin	10
	<hr/>
	100 %
Add: Light Rutile60 %
Manganese Carbonate05 %

This is a semi-opaque glaze with an excellent crackle texture and tan to silvery color characteristics, depending on firing temp. Works well in combination with other glazes.

From *Raku, Pit & Barrel: Firing Techniques*.

Left: Teabowl with Kelley's Low-Fire Shino, by Steven Branfman.

RAKU

RAKU



Alligator Matt White

Cone 05

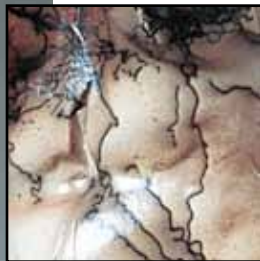
Bone Ash	29%
Gerstley Borate	57
Nepheline Syenite	14
	<hr/> 100%

From *Raku, Pit & Barrel: Firing Techniques*.

RAKU



RAKU



Riggs Terra Sigillata

Water	3½ gal
Sodium Silicate	1 tbsp
Soda Ash	1 tbsp
XX Saggar Clay	15 lbs

Mix ingredients and allow to sit and separate into visual sections. Gently siphon out only the middle section for use.

From *Raku, Pit & Barrel: Firing Techniques*.

RAKU

RAKU



Peel-Away Slip

Fireclay	60 %
Kaolin	20
Silica (Flint)	15
Grog (fine)	5
	<hr/> 100 %

Mix the slip to the consistency of pudding and apply. The slip will crack and during post-firing reduction reveal a smoke pattern when peeled off.

From *Raku, Pit & Barrel: Firing Techniques*.

RAKU



RAKU



Copper Matt Raku

Cone 010–06

Bone Ash	33 %
Gerstley Borate	67
	<hr/> 100 %
Add: Copper Carbonate	8 %
Cobalt Carbonate	2 %

This glaze produces a range of colors, including lusters and opalescence, and is very receptive to post-fire reduction. Apply a thin coat of glaze then wipe off with a dry towel to achieve a matt, speckled surface. Use in combination with this white crackle glaze for a mottled effect.

From *Studio Ceramics: Advanced Techniques*.

White Crackle Raku

Cone 010–06

Barium Carbonate	15 %
Gerstley Borate	40
Nepheline Syenite	35
Silica (Flint)	10
	<hr/> 100 %

From *Studio Ceramics: Advanced Techniques*.



RAKU

RAKU



Basic White Crackle glaze with brushes of Del Favero Luster. Additional color created with embedded glass.

Basic White Crackle

Cone 08

Gerstley Borate	65
Tennessee Ball Clay	5
Nepheline Syenite	15
Flint	5
Tin Oxide	10
	<u>100 %</u>

Del Favero Luster

Cone 08

Gerstley Borate	80 %
Cornwall Stone	20
	<u>100 %</u>

Add: Copper Carb 2 %

From *Raku Firing: Advanced Techniques*.

RAKU



RAKU



Rogers White with brushes of Del Favero Luster. Embedded glass.

Rogers White (clear)

Cone 08

Gerstley Borate	60 %
Spodumene	35
Tennessee Ball Clay	5
	<u>100 %</u>

Yellow

Cone 08

Gerstley Borate	80 %
Cornwall Stone	20
	<u>100 %</u>

Add: Vanadium Stain 6 %

The depth of yellow will vary depending on the stain that you use. Add up to 5% tin oxide for a more opaque quality.

From *Raku Firing: Advanced Techniques*.

RAKU



America's Most Trusted Glazes

RAKU

12 glazes Cone 05



amaco.com